

## RETAIL FOR LEASE



# HAMPDEN PLAZA EAST

10005—10021 E. Hampden Ave.  
Denver, Colorado 80231

Locate your business at this busy and highly visible retail center located at the signalized full access intersection of East Hampden Avenue and Florence Street, traveled by over 46,083 vehicles daily!

Excellent signage and excess parking.

Directly adjacent to 674 apartment units and only 1/2 block from the Hampden Town Center featuring the Savoy, an 800 unit, high-end multi-family community, and a 200,000 square foot Wal-Mart Super Center.

Current tenants include 7-11, Pho 7 and Mr. Hao Grill restaurants, Liquor Store, Todd's Tropical Fish, hair & nail salons, Wave Laundry and Oasis Lounge.

**In-line available for lease**  
**\$15.00 PSF NNN**

**1,365 sf**

Available 4/1/20

**\$1,706.25/Month Rent**

**\$776.91/Month CAM**

**\$2,483.16/Month Total**

**2,438 sf**

**\$3,047.50/Month Rent**

**\$1,387.63/Month CAM**

**\$4,435.13/Month Total**

### PROPERTY STATISTICS

BUILDING		SITE	
SIZE	30,756 SF	SITE SIZE	112,175 SF
YOC	1975	PARKING	Surface
MATERIALS	Masonry	ZONING	B-3
CAM (2020)	\$6.83	CITY/COUNTY	Denver

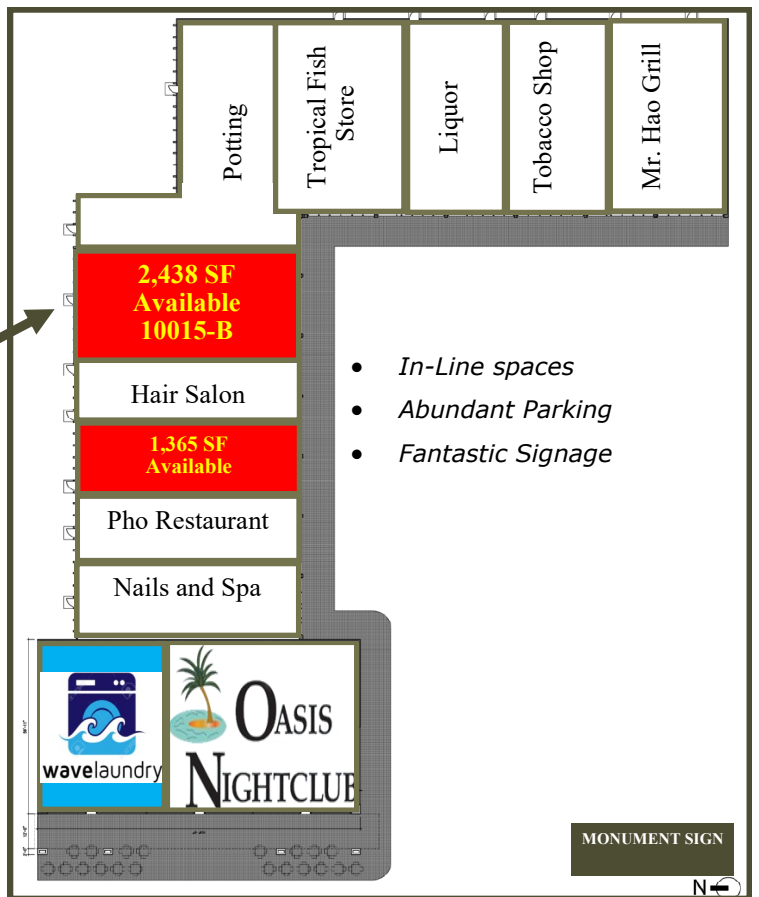
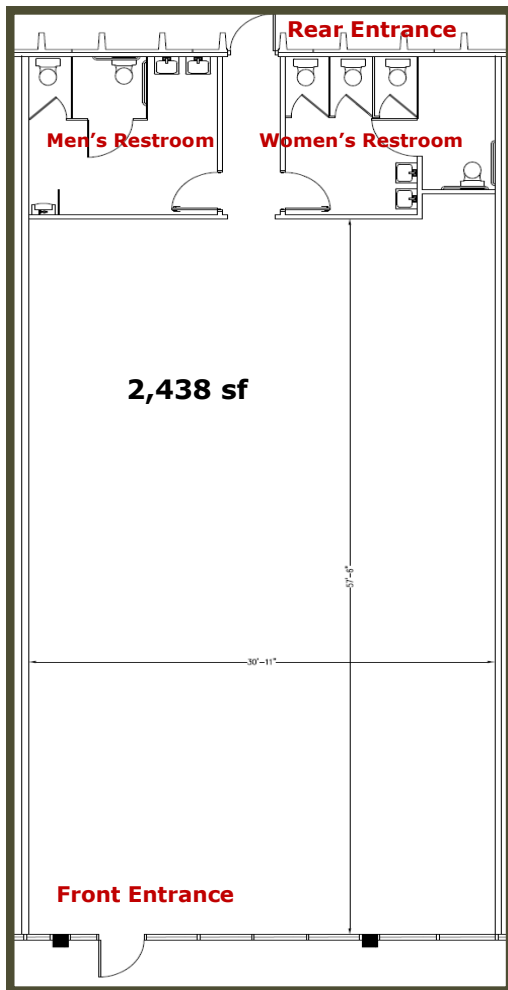
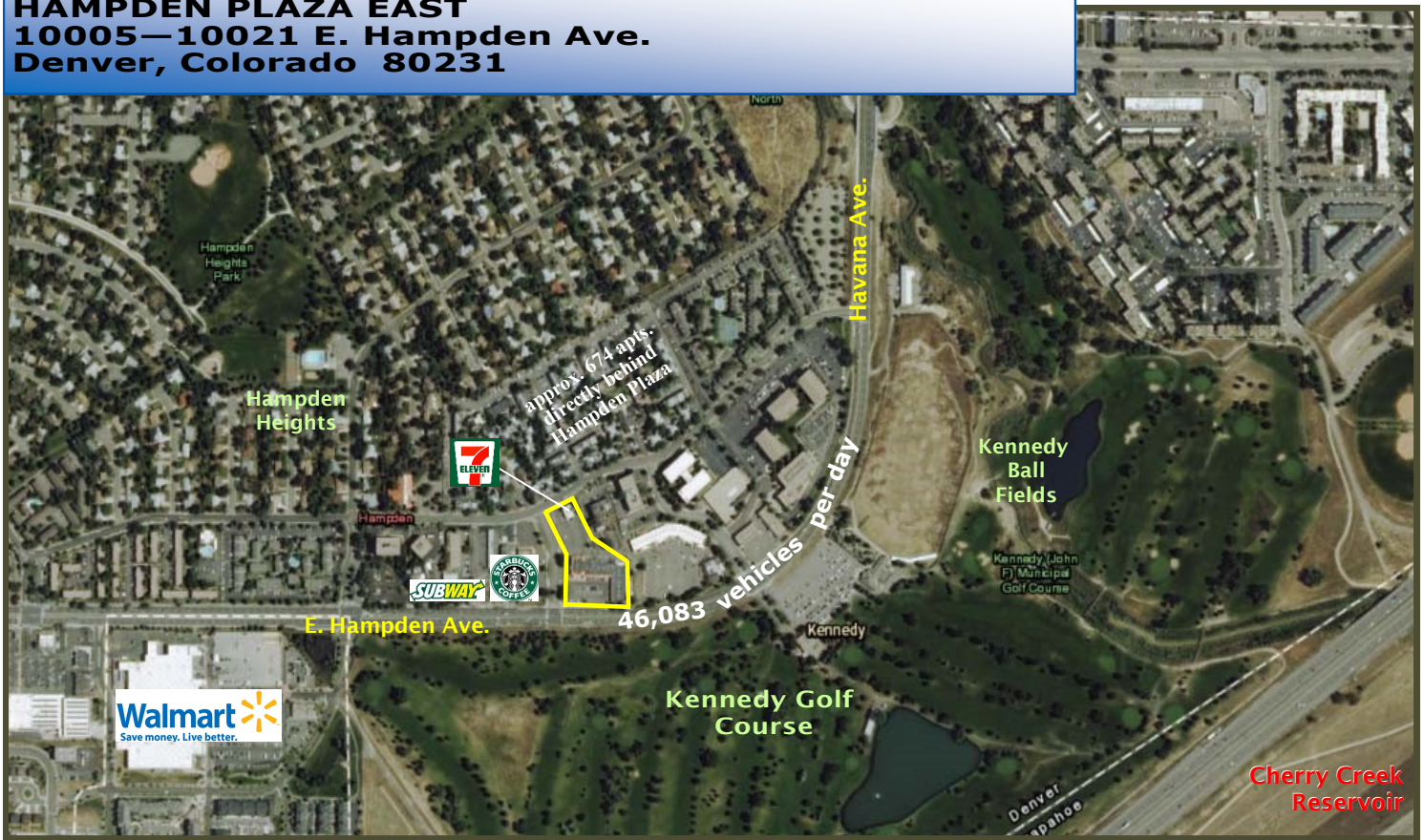
### DEMOGRAPHICS (2023 est.)

Radius	1-Mile	3-Mile	5-Mile
Population	14,930	146,855	408,139
Households	6,779	69,833	179,234
Median Income	\$52,505	\$65,297	\$67,373

**FOR MORE INFORMATION, PLEASE CALL:**  
**John V. Propp, CCIM—303-692-1816**  
 6565 S. Dayton St., Suite 3000  
 Greenwood Village, CO 80111  
 John@JohnProppCommercial.com  
 learn more at [www.JohnProppCommercial.com](http://www.JohnProppCommercial.com)



**HAMPDEN PLAZA EAST**  
**10005—10021 E. Hampden Ave.**  
**Denver, Colorado 80231**



No warranty or representation is made as to the accuracy of the foregoing information. Terms of sale or lease and availability are subject to change or withdrawal without notice.