

OFFICE/FOR LEASE

First year lease rate of \$6.00 psf on second floor suites



**PARK LANE BUSINESS CENTER
8122 SOUTHPARK LANE
LITTLETON, CO 80120**

Park Lane Business Center, located in the Campus at Southpark Business Center, is a well maintained, mixed use office/flex warehouse facility.

Second floor walk up only, individual office suites with private entrances afford 24-hour access. Fantastic mountain views. Lots of windows – lots of natural light. Individual HVAC units. Ample parking.

The property is located between Mineral and County Line just west of Broadway and easily accessible via Santa Fe Drive (Hwy 85), I-25 and C-470.

BEST RATES IN SOUTHPARK!

Second Floor Office Spaces

\$6.00 PSF NNN first year lease rate!

\$10.00 psf NNN

(2nd and 3rd year lease rates)

PROPERTY STATISTICS

BUILDING

SITE

| | | | |
|------------------|------------------------------------|------------------|----------------------|
| SIZE | 43,987 SF | SITE SIZE | 2.542 acres |
| YOC | 1986 | PARKING | 2.0:1,000, 86 |
| MATERIALS | Steel Frame with Stucco & Concrete | ZONING | PDI/Light Industrial |
| CAM 2025 | \$7.98 | | |



FOR MORE INFORMATION, PLEASE CALL:

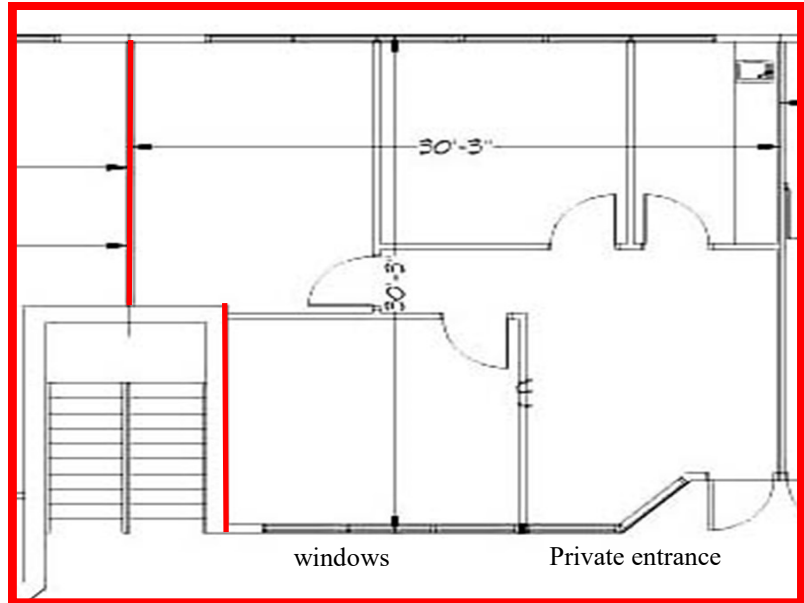
John V. Propp, CCIM, Joshua Cohen
303-692-1816 * 303-867-2603
6565 S. Dayton St., Suite 3000
Greenwood Village, CO 80111
john@johnproppcommercial.com
Joshua@johnproppcommercial.com
learn more at www.JohnProppCommercial.com



**PARK LANE BUSINESS CENTER
8122 SOUTHPARK LANE
LITTLETON, CO 80120**

**Suite 209
907 SF**

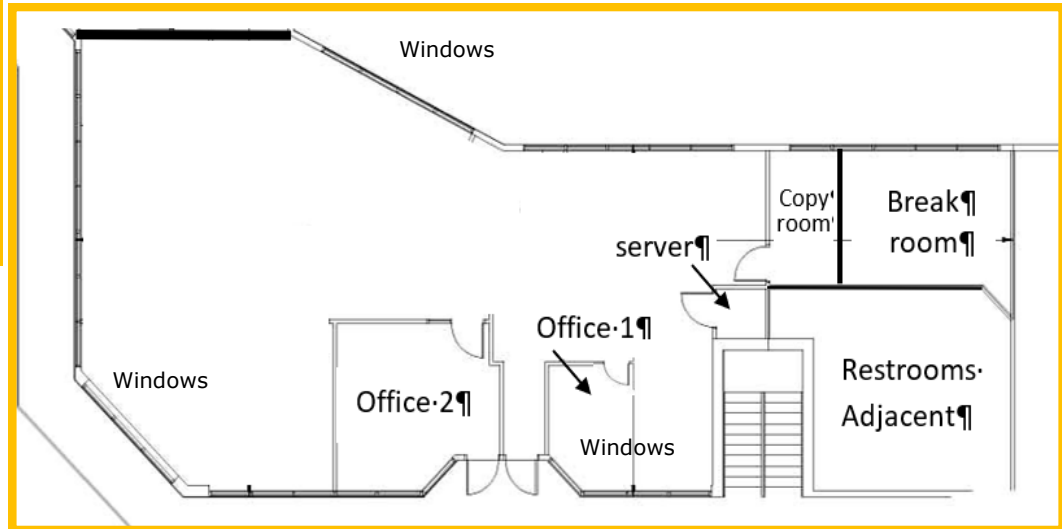
MONTHLY RENT:
RENT: \$453.50
CAM: \$603.15
TOTAL: \$1,056.65



**First year lease rate of
\$6.00 psf on second
floor office suites**

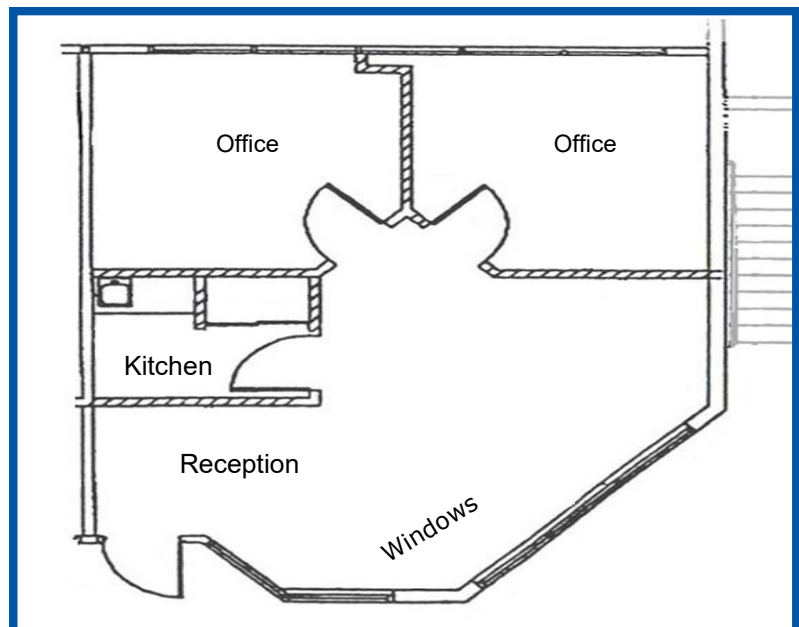
**Suite 211
2,559 sf**

MONTHLY RENT:
RENT: \$1,279.50
CAM: \$1,701.73
TOTAL: \$2,981.23



**Suite 215
742 SF**

MONTHLY RENT:
RENT: \$371.00
CAM: \$493.43
TOTAL: \$864.43



No warranty or representation is made as to the accuracy of the foregoing information. Terms of sale or lease and availability are subject to change or withdrawal without notice.