

OFFICE FOR LEASE

First year lease rate of \$6.00 psf on second floor suites!



PARK LANE BUSINESS CENTER 8122 SOUTHPARK LANE LITTLETON, CO 80120

Park Lane Business Center, located in the Campus at Southpark Business Center, is a well maintained, mixed use office/flex warehouse facility.

Second floor walk up only, individual office suites with private entrances afford 24-hour access. Fantastic mountain views. Lots of windows – lots of natural light. Individual HVAC units. Ample parking.

The property is located between Mineral and County Line just west of Broadway and easily accessible via Santa Fe Drive (Hwy 85), I-25 and C-470.

BEST RATES IN SOUTHPARK!

Second Floor Office Spaces

\$6.00 psf NNN first year lease rate!

\$10.00 psf NNN (2nd and 3rd year lease rates)

PROPERTY STATISTICS

<u>BUILDING</u>		<u>SITE</u>	
SIZE	43,987 SF	SITE SIZE	2.542 acres
YOC	1986	PARKING	2.0:1,000, 86
MATERIALS	Steel Frame with Stucco & Concrete	ZONING	PDI/Light Industrial
CAM 2026	\$8.10		



FOR MORE INFORMATION, PLEASE CALL:

John V. Propp, CCIM—303-692-1816
6020 Greenwood Plaza Blvd., Suite 100
Greenwood Village, CO 80111
john@johnproppcommercial.com
Joshua@johnproppcommercial.com
learn more at www.JohnProppCommercial.com

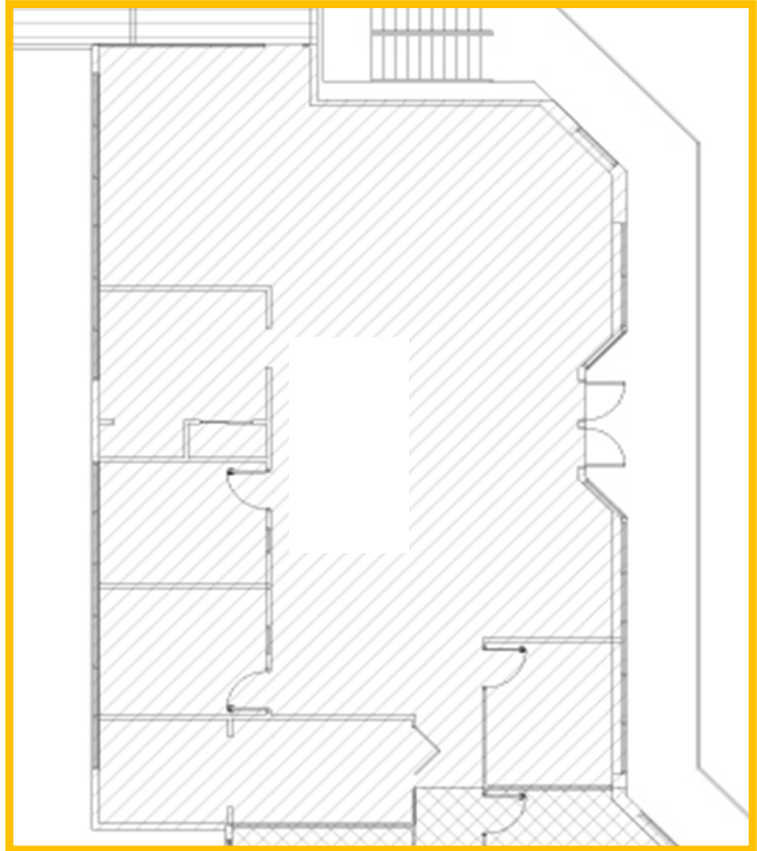


Lease rate of \$10.00 psf on second floor office suites

**Suite 202
2,717 sf (approx.)**

MONTHLY RENT:
RENT: \$1,358.50
CAM: \$1,833.98
TOTAL: \$3,192.48

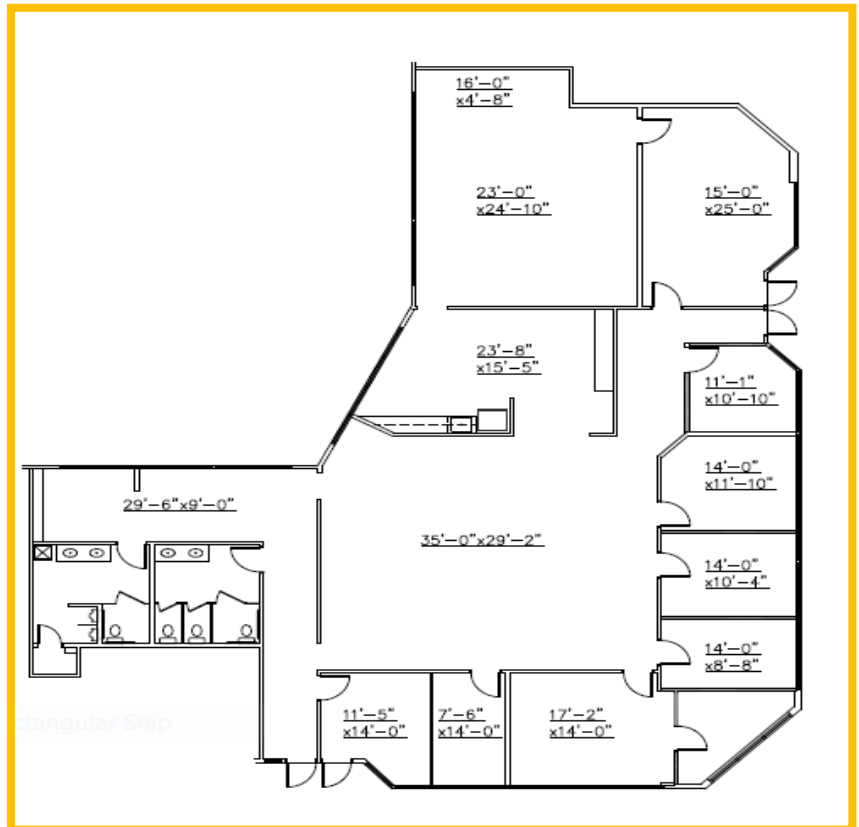
Available 10/1/26



**Suite 205
4,970 sf (approx.)**

MONTHLY RENT:
RENT: \$2,485.00
CAM: \$3,354.75
TOTAL: \$5,839.75

Available 10/1/26

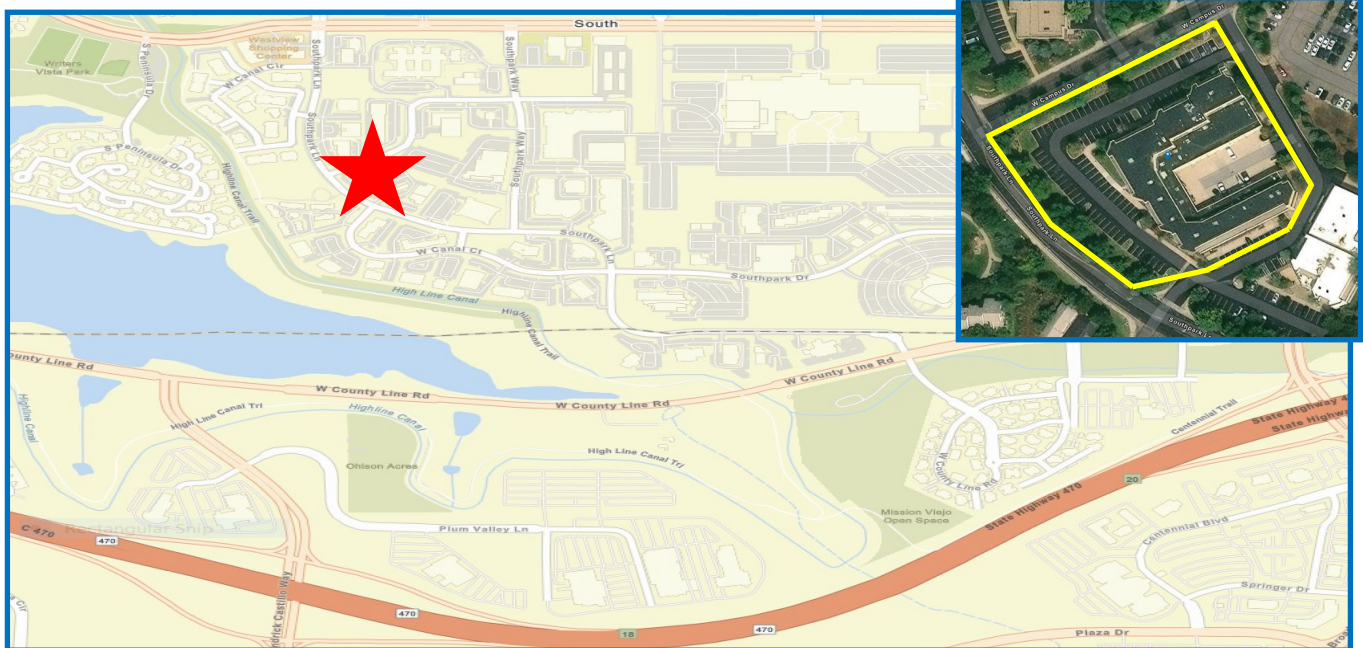
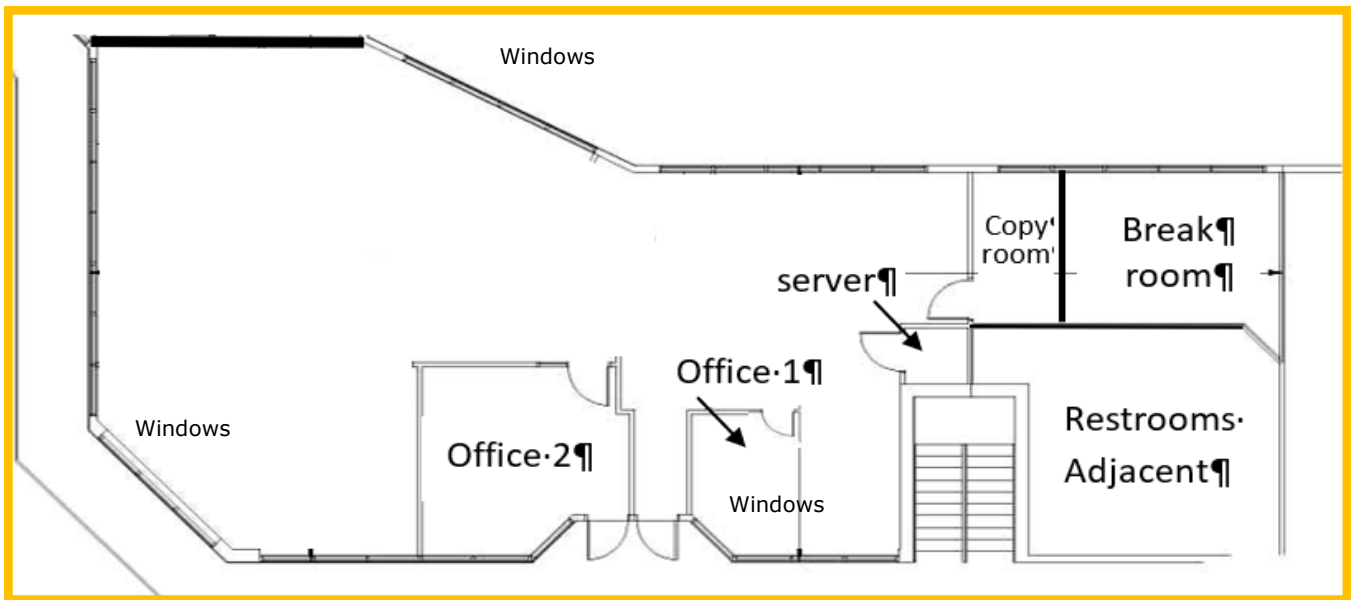


**PARK LANE BUSINESS CENTER
8122 SOUTHPARK LANE
LITTLETON, CO 80120**

Lease rate of \$10.00 psf on second floor office suites

**Suite 211
2,559 sf (approx.)**

MONTHLY RENT:
RENT: \$1,279.50
CAM: \$1,727.33
TOTAL: \$3,006.83



No warranty or representation is made as to the accuracy of the foregoing information. Terms of sale or lease and availability are subject to change or withdrawal without notice.