

## **CHASE TOWER**

333 W. HAMPDEN AVENUE  
ENGLEWOOD, CO 80110

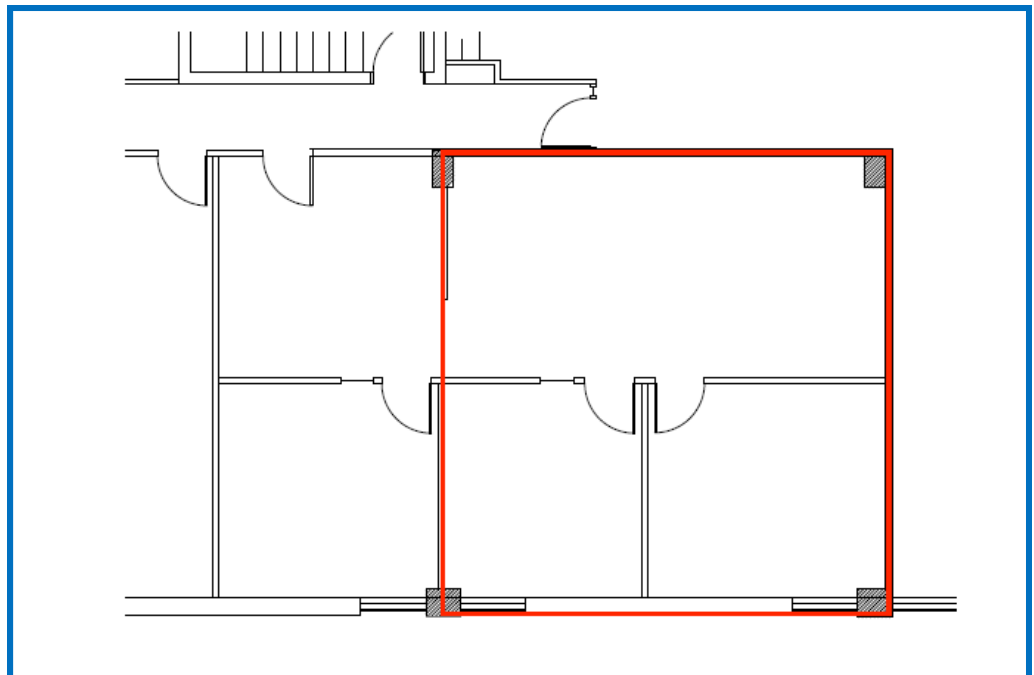


**\$19.00—\$21.00 Full Service Rate**

**Full service lease rate—all expenses included**

**Suite 435  
837 SF**

**Two offices and open space**



No warranty or representation is made as to the accuracy of the foregoing information.  
Terms of sale or lease and availability are subject to change or withdrawal without notice.

**FOR MORE INFORMATION, PLEASE CALL:**

**John V. Propp, CCIM—303/692-1816  
6565 S. Dayton St., Suite 3000  
Greenwood Village, CO 80111**

**learn more at [www.JohnProppCommercial.com](http://www.JohnProppCommercial.com)**



## CHASE TOWER

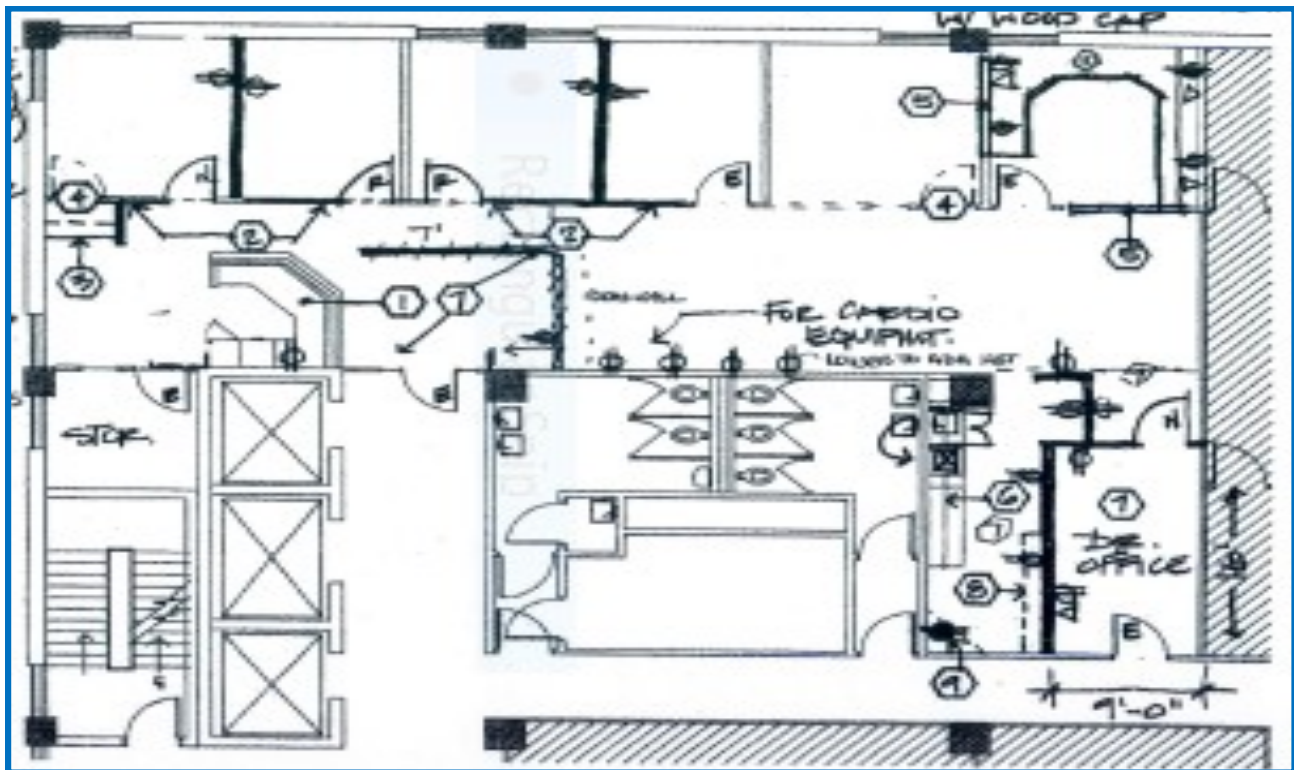
333 W. HAMPDEN AVENUE  
ENGLEWOOD, CO 80110

**\$19.00—\$21.00 Full Service Rate**

**Full service lease rate—all expenses included**

**Suite 500  
2,344 SF**

**Former PT space, Multiple offices, large  
open space, reception**



No warranty or representation is made as to the accuracy of the foregoing information.  
Terms of sale or lease and availability are subject to change or withdrawal without notice.

**FOR MORE INFORMATION, PLEASE CALL:**

**John V. Propp, CCIM—303/692-1816**  
6565 S. Dayton St., Suite 3000  
Greenwood Village, CO 80111

learn more at [www.JohnProppCommercial.com](http://www.JohnProppCommercial.com)



## CHASE TOWER

333 W. HAMPDEN AVENUE  
ENGLEWOOD, CO 80110

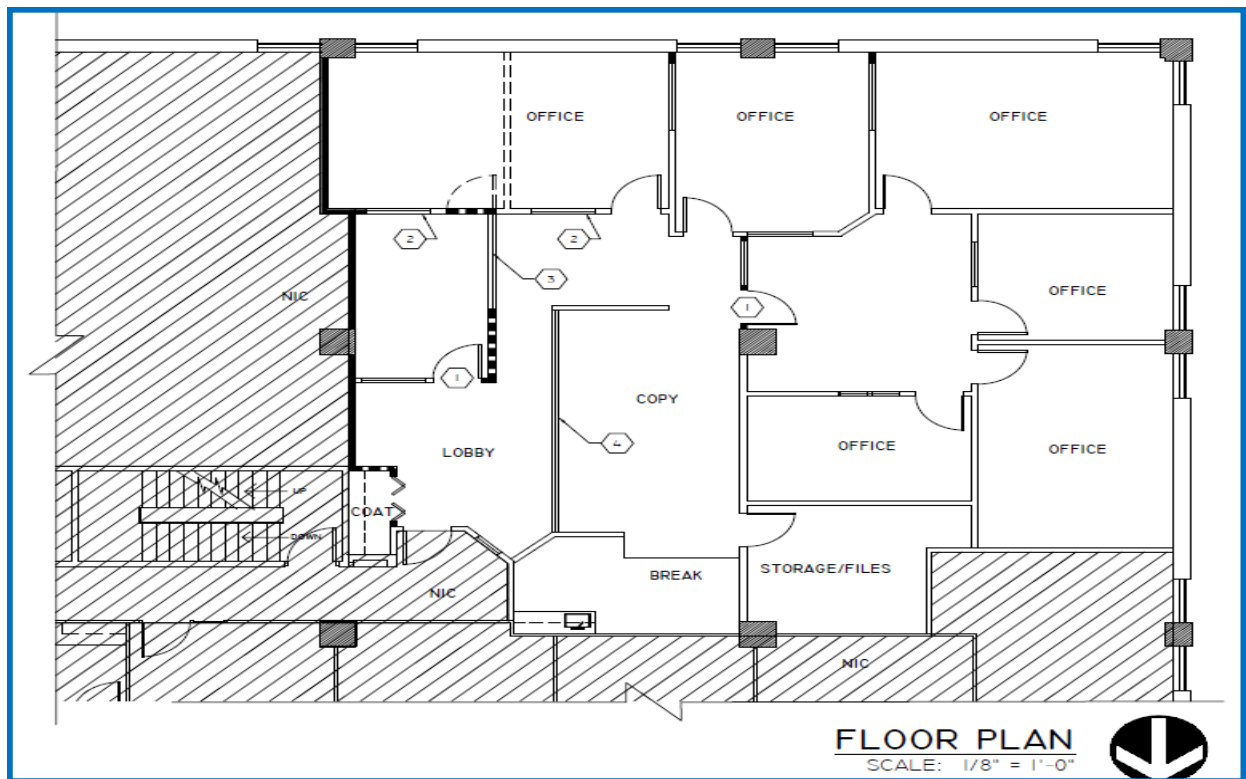


**\$19.00—\$21.00 Full Service Rate**

**Full service lease rate—all expenses included**

**Suite 545  
2,817 SF**

**8 offices, kitchenette, bullpen,  
conference room, storage**



No warranty or representation is made as to the accuracy of the foregoing information.  
Terms of sale or lease and availability are subject to change or withdrawal without notice.

**FOR MORE INFORMATION, PLEASE CALL:**

**John V. Propp, CCIM—303/692-1816**  
**6565 S. Dayton St., Suite 3000**  
**Greenwood Village, CO 80111**

**learn more at [www.JohnProppCommercial.com](http://www.JohnProppCommercial.com)**



## CHASE TOWER

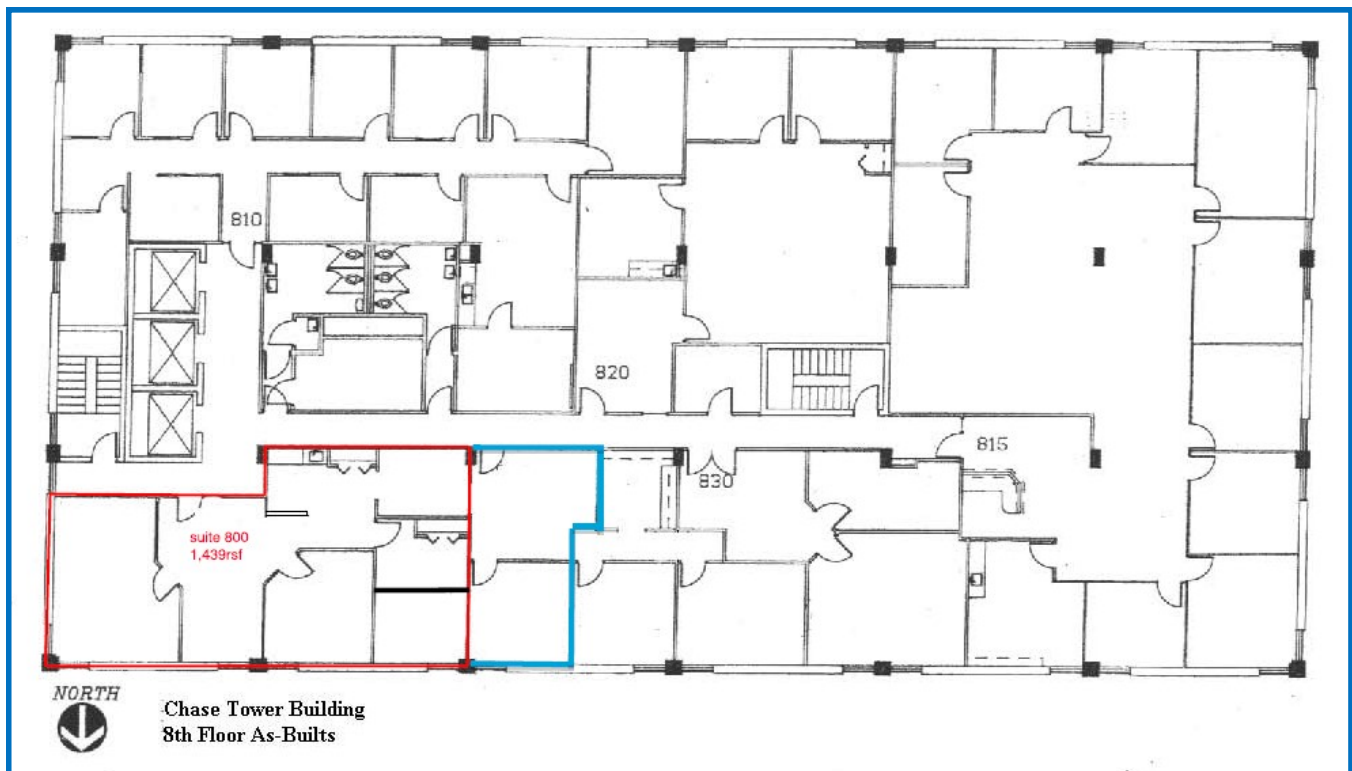
333 W. HAMPDEN AVENUE  
ENGLEWOOD, CO 80110

**\$19.00—\$21.00 Full Service Rate**

**Full service lease rate—all expenses included**

**Suite 800  
1,439 square feet**

**Four offices, reception, breakroom,  
storage room**



No warranty or representation is made as to the accuracy of the foregoing information.  
Terms of sale or lease and availability are subject to change or withdrawal without notice.

**FOR MORE INFORMATION, PLEASE CALL:**

**John V. Propp, CCIM—303/692-1816  
6565 S. Dayton St., Suite 3000  
Greenwood Village, CO 80111**

**learn more at [www.JohnProppCommercial.com](http://www.JohnProppCommercial.com)**





## CHASE TOWER

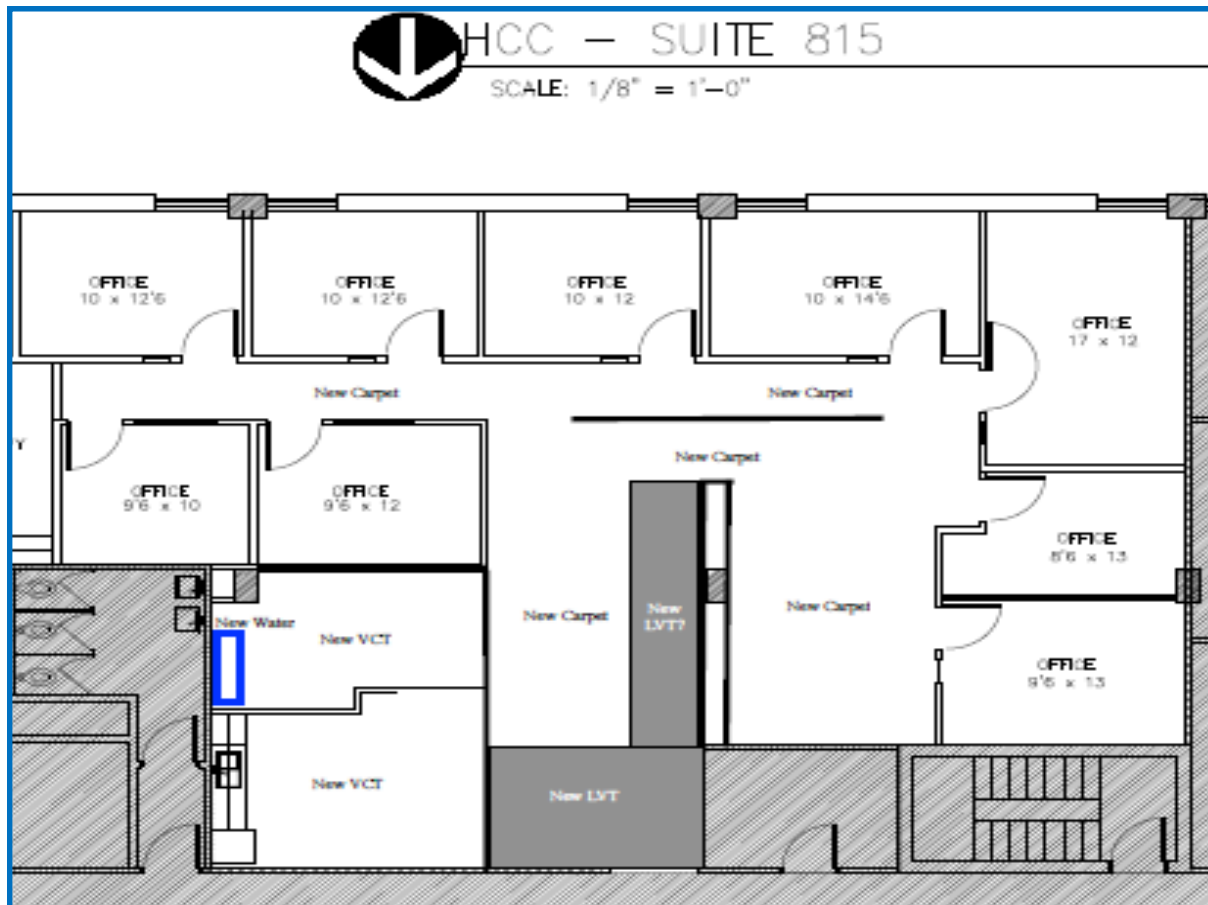
333 W. HAMPDEN AVENUE  
ENGLEWOOD, CO 80110

**\$19.00—\$21.00 Full Service Rate**

**Full service lease rate—all expenses included**

**Suite 815**  
**2,777 square feet**

**Offices, reception, kitchenette, workroom**



No warranty or representation is made as to the accuracy of the foregoing information.  
Terms of sale or lease and availability are subject to change or withdrawal without notice.

**FOR MORE INFORMATION, PLEASE CALL:**

**John V. Propp, CCIM—303/692-1816**  
**6565 S. Dayton St., Suite 3000**  
**Greenwood Village, CO 80111**

**learn more at [www.JohnProppCommercial.com](http://www.JohnProppCommercial.com)**



## CHASE TOWER

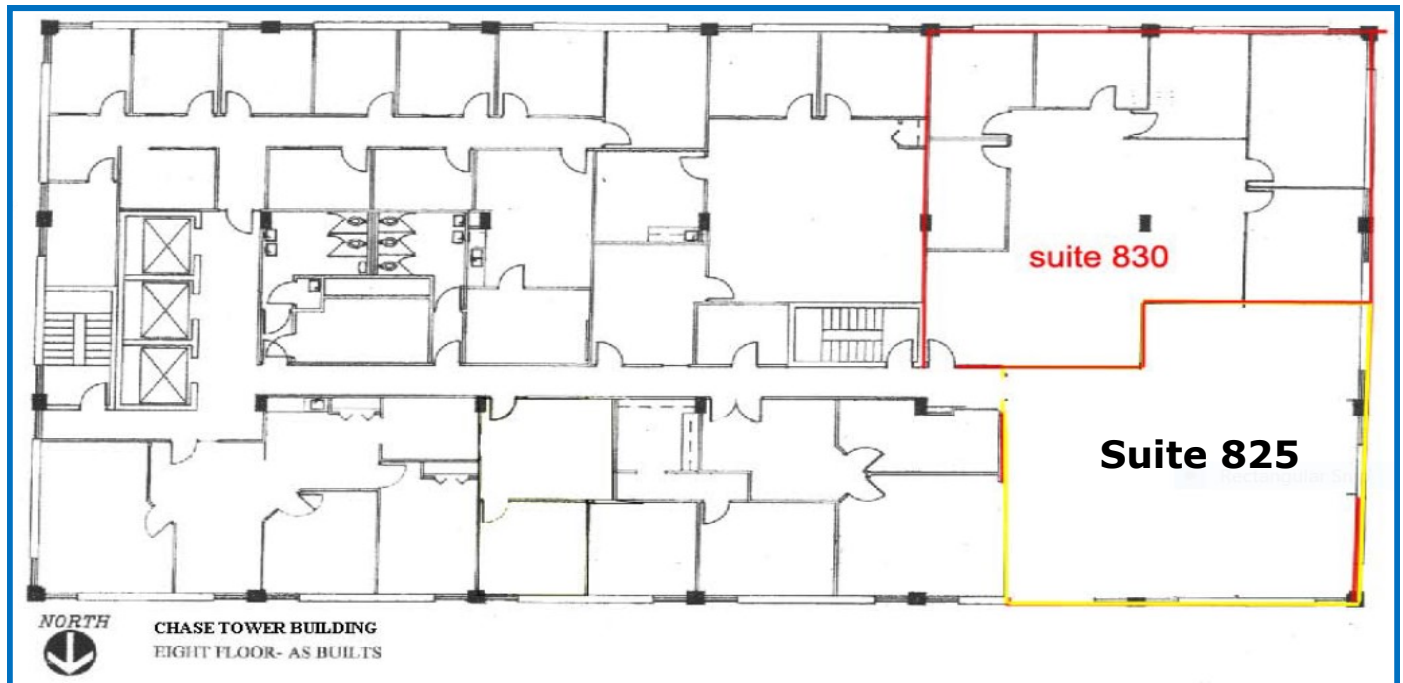
333 W. HAMPDEN AVENUE  
ENGLEWOOD, CO 80110

**\$19.00—\$21.00 Full Service Rate**

**Full service lease rate—all expenses included**

**Suite 825**  
**651 square feet**

**Entry open space, one office**



No warranty or representation is made as to the accuracy of the foregoing information.  
Terms of sale or lease and availability are subject to change or withdrawal without notice.

**FOR MORE INFORMATION, PLEASE CALL:**

**John V. Propp, CCIM—303/692-1816**  
**6565 S. Dayton St., Suite 3000**  
**Greenwood Village, CO 80111**

**learn more at [www.JohnProppCommercial.com](http://www.JohnProppCommercial.com)**



## CHASE TOWER

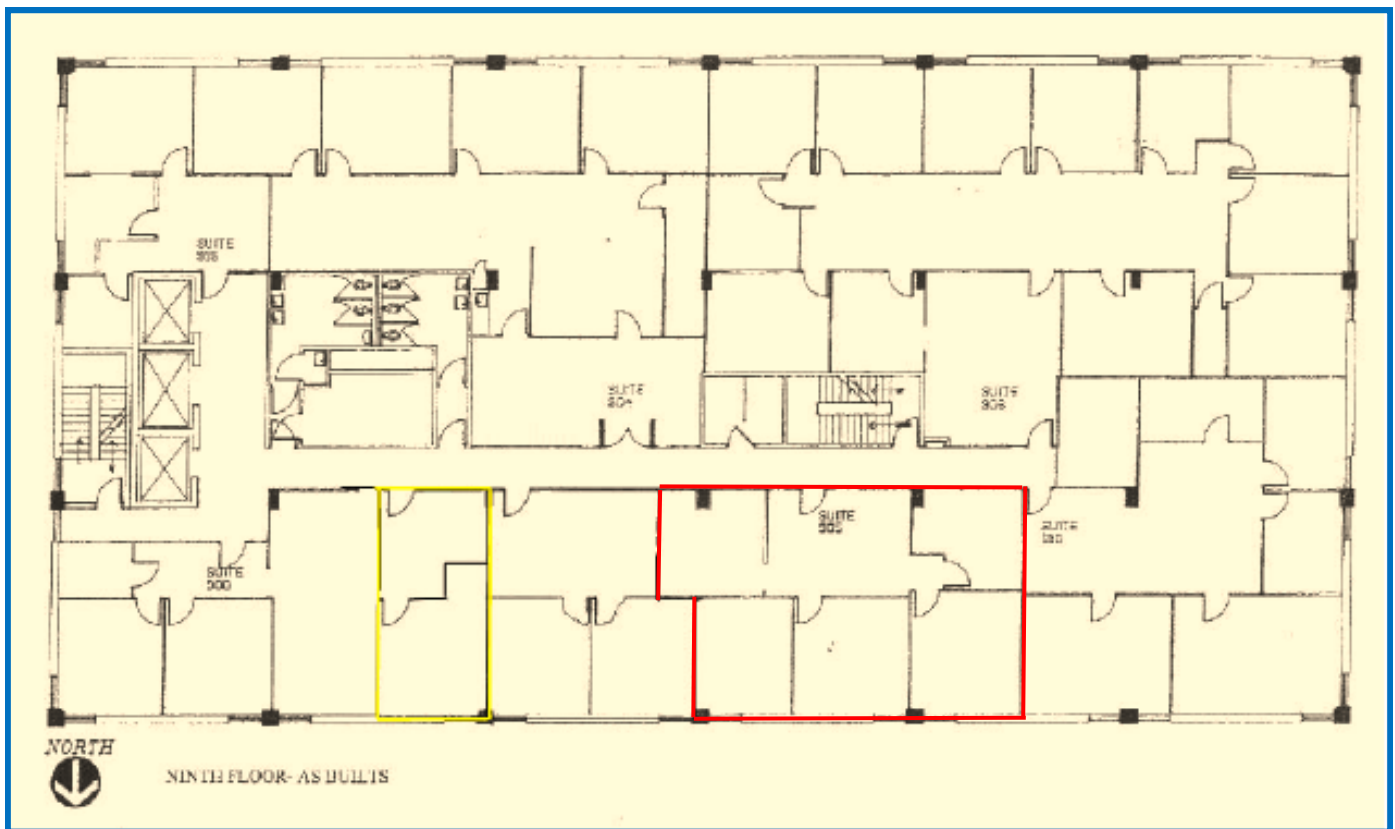
333 W. HAMPDEN AVENUE  
ENGLEWOOD, CO 80110

**\$19.00—\$21.00 Full Service Rate**

**Full service lease rate—all expenses included**

**Suite 905**  
**1,047 square feet**

**Three offices, reception, open space**



No warranty or representation is made as to the accuracy of the foregoing information.  
Terms of sale or lease and availability are subject to change or withdrawal without notice.

**FOR MORE INFORMATION, PLEASE CALL:**

**John V. Propp, CCIM—303/692-1816**  
**6565 S. Dayton St., Suite 3000**  
**Greenwood Village, CO 80111**

**learn more at [www.JohnProppCommercial.com](http://www.JohnProppCommercial.com)**



## CHASE TOWER

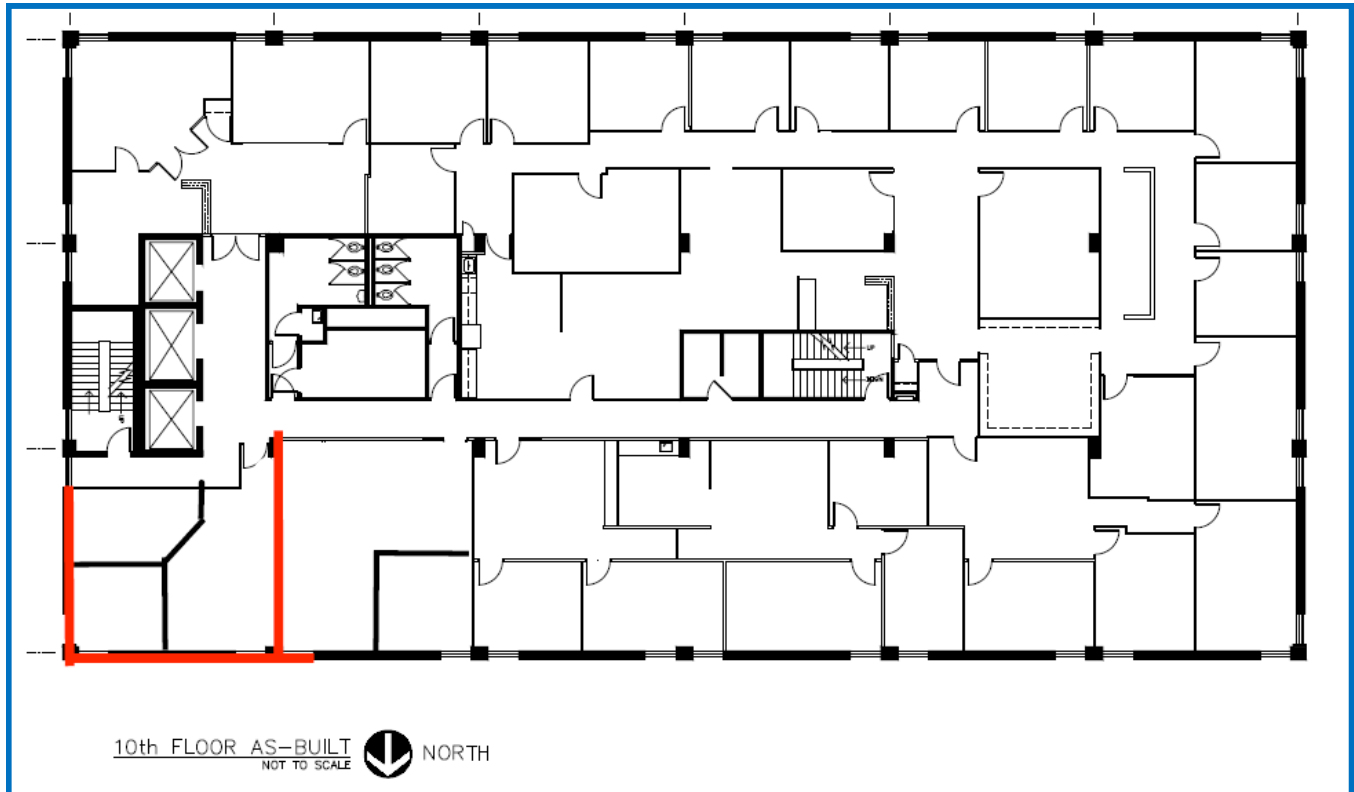
333 W. HAMPDEN AVENUE  
ENGLEWOOD, CO 80110

**\$19.00—\$21.00 Full Service Rate**

**Full service lease rate—all expenses included**

**Suite 1010  
692 square feet**

**Two offices, open space**



No warranty or representation is made as to the accuracy of the foregoing information.  
Terms of sale or lease and availability are subject to change or withdrawal without notice.

**FOR MORE INFORMATION, PLEASE CALL:**

**John V. Propp, CCIM—303/692-1816  
6565 S. Dayton St., Suite 3000  
Greenwood Village, CO 80111**

**learn more at [www.JohnProppCommercial.com](http://www.JohnProppCommercial.com)**

