

CHASE TOWER

333 W. HAMPDEN AVENUE
ENGLEWOOD, CO 80110

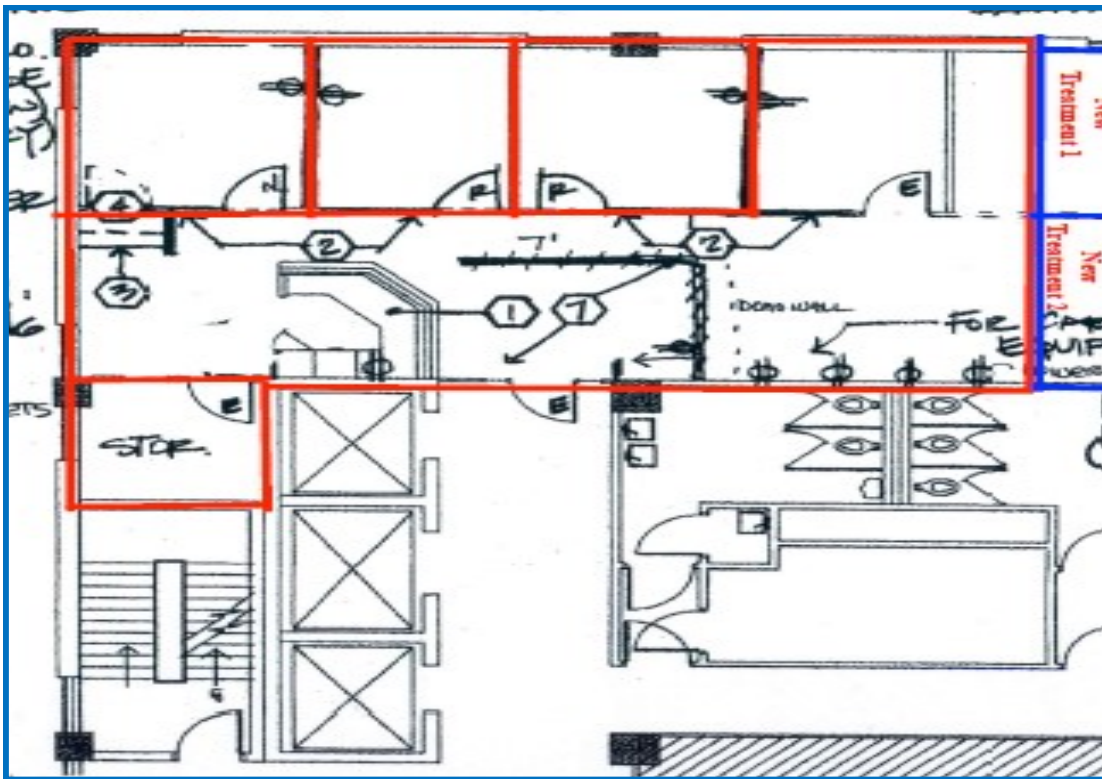


\$19.00—\$21.00 Full Service Rate

Full service lease rate—all expenses included

**Suite 500
1,417 SF**

Four offices, open space



No warranty or representation is made as to the accuracy of the foregoing information.
Terms of sale or lease and availability are subject to change or withdrawal without notice.

FOR MORE INFORMATION, PLEASE CALL:

**John V. Propp, CCIM—303/692-1816
6565 S. Dayton St., Suite 3000
Greenwood Village, CO 80111**

learn more at www.JohnProppCommercial.com



CHASE TOWER

333 W. HAMPDEN AVENUE
ENGLEWOOD, CO 80110

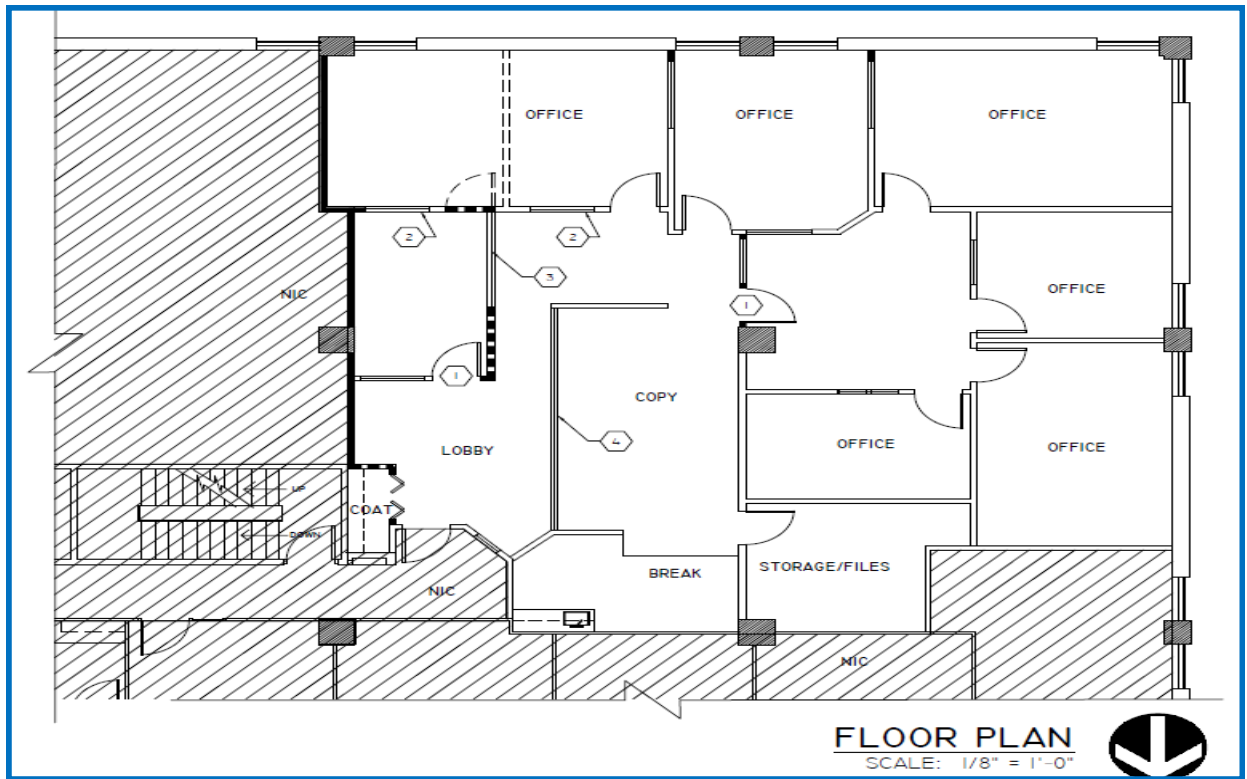


\$19.00—\$21.00 Full Service Rate

Full service lease rate—all expenses included

**Suite 545
2,817 SF**

**8 offices, kitchenette, bullpen,
conference room, storage**



No warranty or representation is made as to the accuracy of the foregoing information.
Terms of sale or lease and availability are subject to change or withdrawal without notice.

FOR MORE INFORMATION, PLEASE CALL:

**John V. Propp, CCIM—303/692-1816
6565 S. Dayton St., Suite 3000
Greenwood Village, CO 80111**

learn more at www.JohnProppCommercial.com



CHASE TOWER

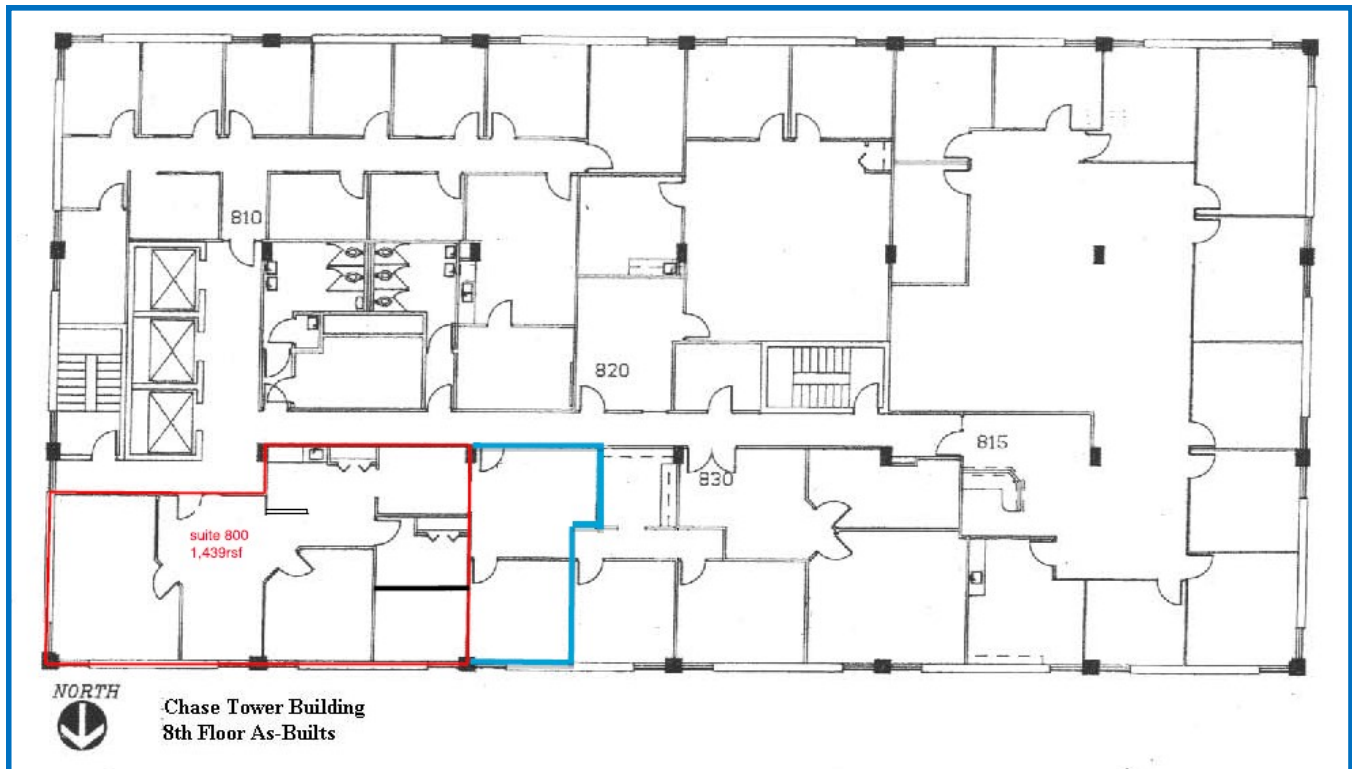
333 W. HAMPDEN AVENUE
ENGLEWOOD, CO 80110

\$19.00—\$21.00 Full Service Rate

Full service lease rate—all expenses included

**Suite 800
1,439 square feet**

**Four offices, reception, breakroom,
storage room**



No warranty or representation is made as to the accuracy of the foregoing information.
Terms of sale or lease and availability are subject to change or withdrawal without notice.

FOR MORE INFORMATION, PLEASE CALL:

**John V. Propp, CCIM—303/692-1816
6565 S. Dayton St., Suite 3000
Greenwood Village, CO 80111**

learn more at www.JohnProppCommercial.com



CHASE TOWER

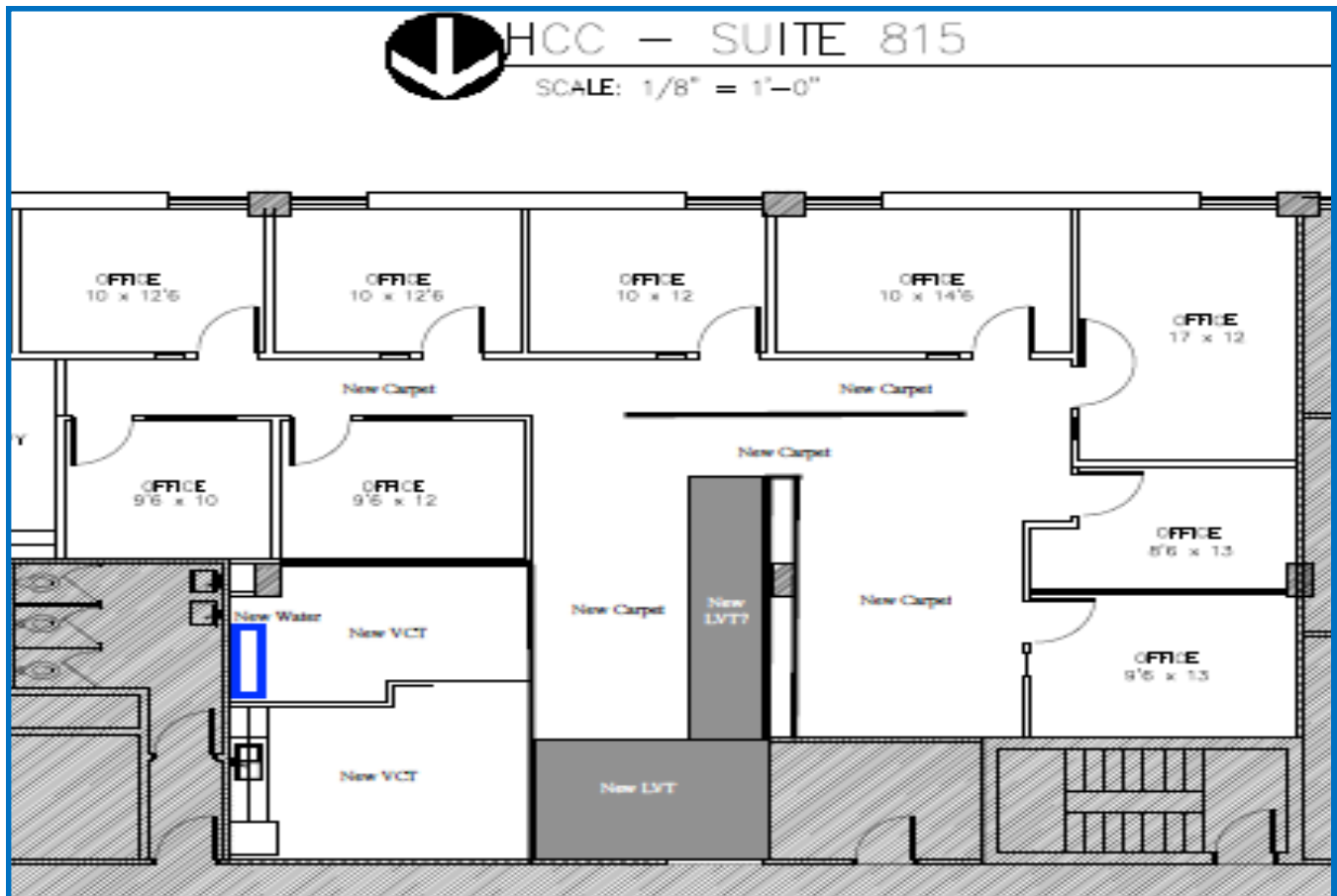
333 W. HAMPDEN AVENUE
ENGLEWOOD, CO 80110

\$19.00—\$21.00 Full Service Rate

Full service lease rate—all expenses included

**Suite 815
2,777 square feet**

Offices, reception, kitchenette, workroom



No warranty or representation is made as to the accuracy of the foregoing information.
Terms of sale or lease and availability are subject to change or withdrawal without notice.

FOR MORE INFORMATION, PLEASE CALL:

John V. Propp, CCIM—303/692-1816
6565 S. Dayton St., Suite 3000
Greenwood Village, CO 80111

learn more at www.JohnProppCommercial.com



CHASE TOWER

333 W. HAMPDEN AVENUE
ENGLEWOOD, CO 80110

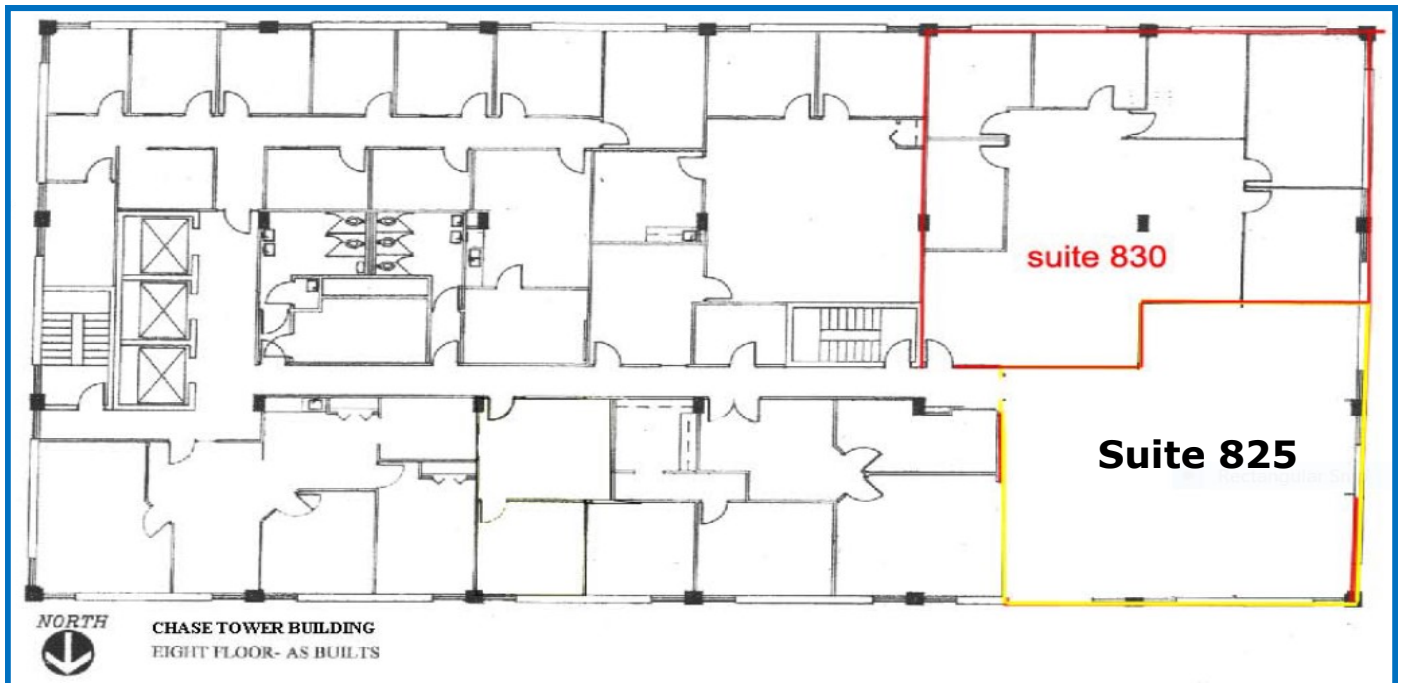


\$19.00—\$21.00 Full Service Rate

Full service lease rate—all expenses included

**Suite 825
651 square feet**

Entry open space, one office



No warranty or representation is made as to the accuracy of the foregoing information.
Terms of sale or lease and availability are subject to change or withdrawal without notice.

FOR MORE INFORMATION, PLEASE CALL:

John V. Propp, CCIM—303/692-1816
6565 S. Dayton St., Suite 3000
Greenwood Village, CO 80111

learn more at www.JohnProppCommercial.com



CHASE TOWER

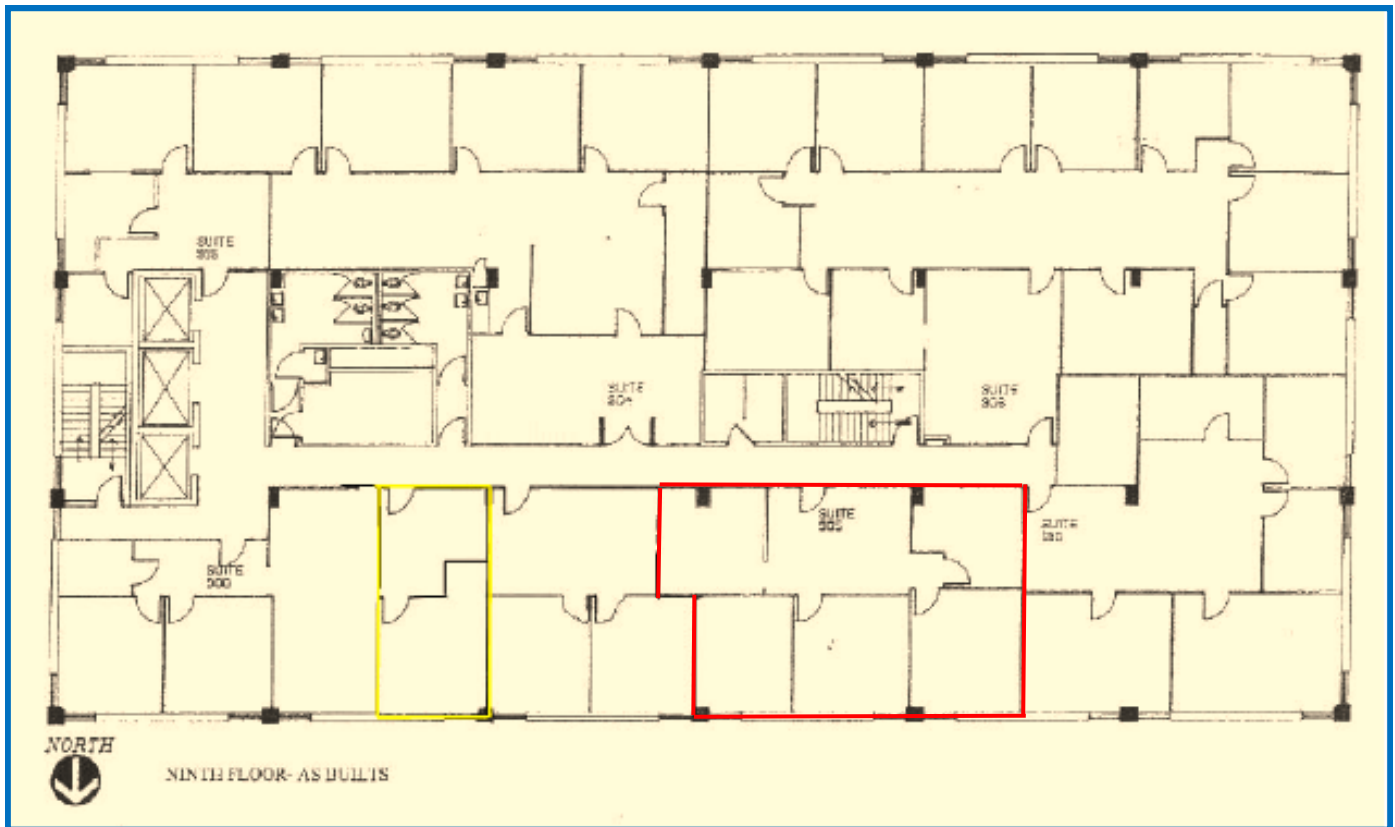
333 W. HAMPDEN AVENUE
ENGLEWOOD, CO 80110

\$19.00—\$21.00 Full Service Rate

Full service lease rate—all expenses included

**Suite 905
1,047 square feet**

Three offices, reception, open space



No warranty or representation is made as to the accuracy of the foregoing information.
Terms of sale or lease and availability are subject to change or withdrawal without notice.

FOR MORE INFORMATION, PLEASE CALL:

**John V. Propp, CCIM—303/692-1816
6565 S. Dayton St., Suite 3000
Greenwood Village, CO 80111**

learn more at www.JohnProppCommercial.com



CHASE TOWER

333 W. HAMPDEN AVENUE
ENGLEWOOD, CO 80110

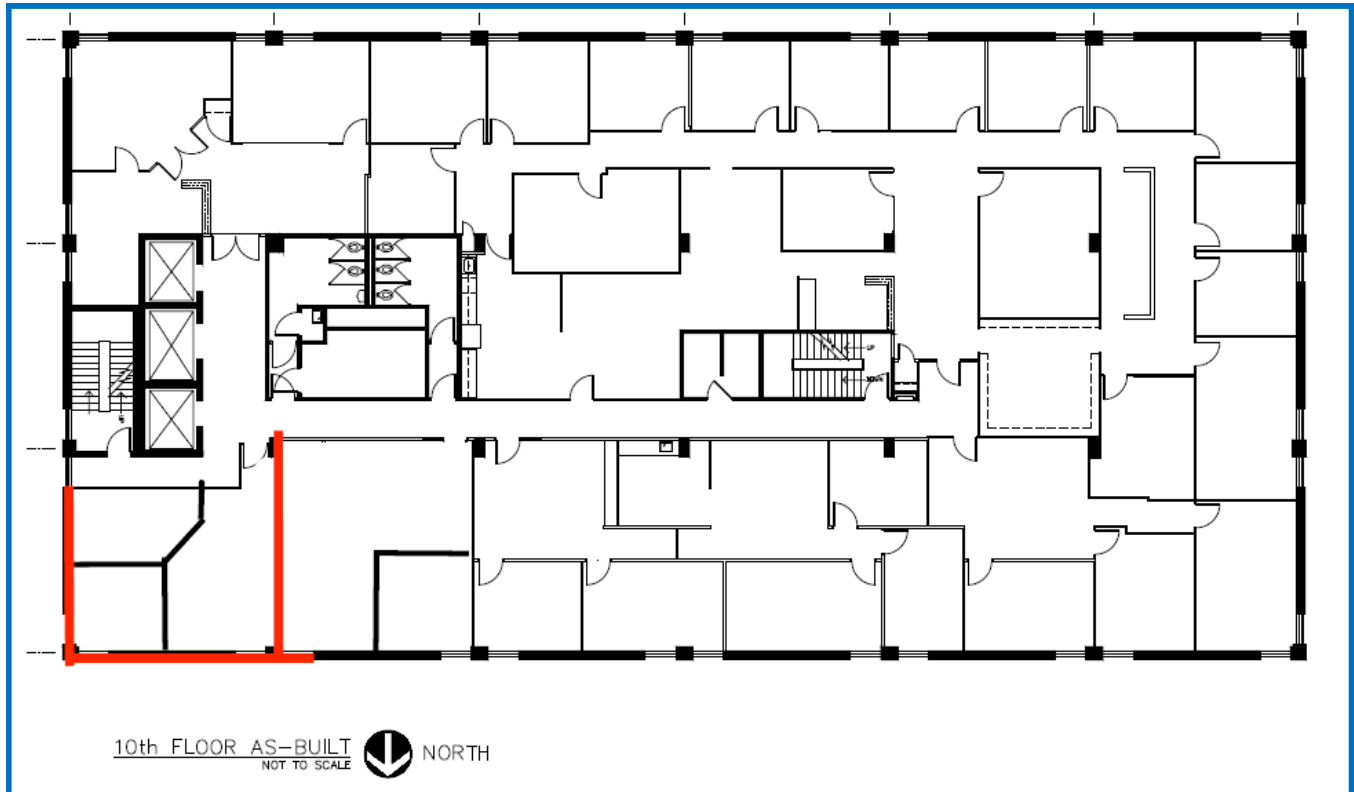


\$19.00—\$21.00 Full Service Rate

Full service lease rate—all expenses included

**Suite 1010
692 square feet**

Two offices, open space



10th FLOOR AS-BUILT
NOT TO SCALE

No warranty or representation is made as to the accuracy of the foregoing information.
Terms of sale or lease and availability are subject to change or withdrawal without notice.

FOR MORE INFORMATION, PLEASE CALL:

**John V. Propp, CCIM—303/692-1816
6565 S. Dayton St., Suite 3000
Greenwood Village, CO 80111**

learn more at www.JohnProppCommercial.com



CHASE TOWER

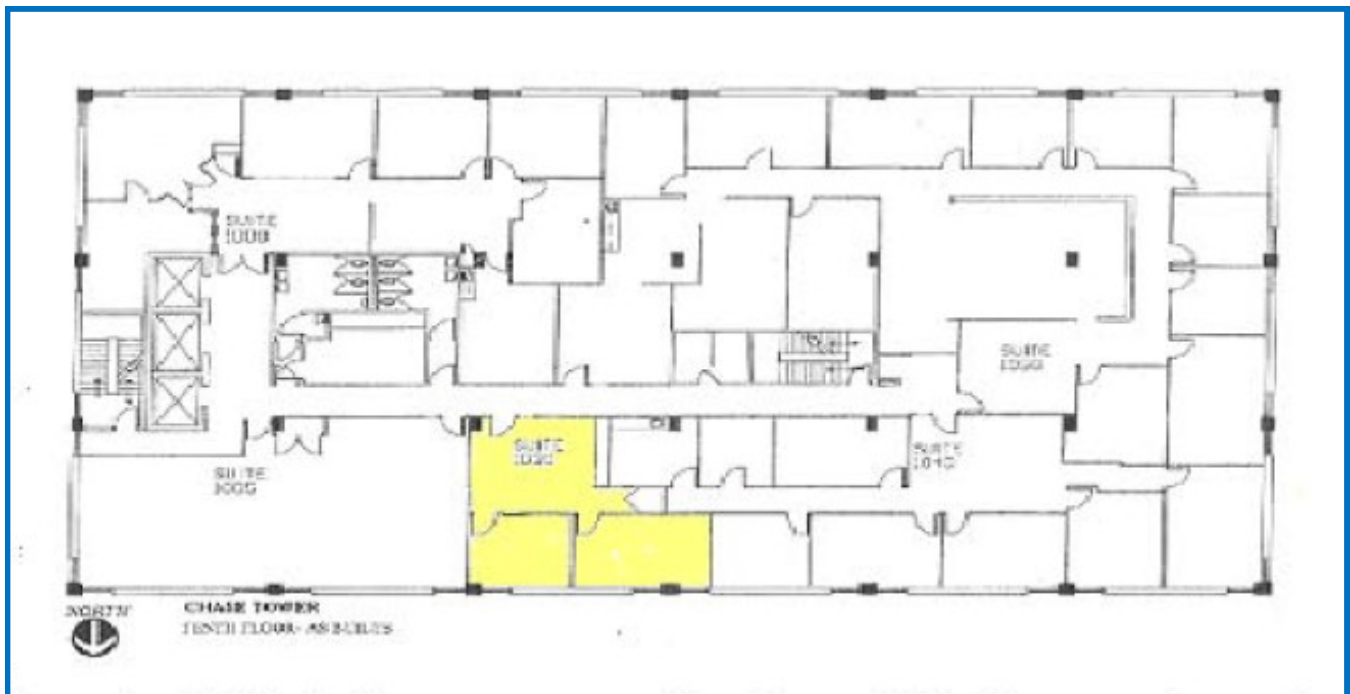
333 W. HAMPDEN AVENUE
ENGLEWOOD, CO 80110

\$19.00—\$21.00 Full Service Rate

Full service lease rate—all expenses included

**Suite 1030
781 square feet**

**Two offices and reception area.
Reception has built-ins and storage closet.
Recently upgraded with new carpet,
ceiling tiles, light fixtures.**



No warranty or representation is made as to the accuracy of the foregoing information.
Terms of sale or lease and availability are subject to change or withdrawal without notice.

FOR MORE INFORMATION, PLEASE CALL:

**John V. Propp, CCIM—303/692-1816
6565 S. Dayton St., Suite 3000
Greenwood Village, CO 80111**

learn more at www.JohnProppCommercial.com

