



**FLEX/INDUSTRIAL/
RETAIL FOR LEASE**

**DRANSFELDT FLEX/WAREHOUSE CONDOS
10206, 10218 PROGRESS LANE
PARKER, CO 80134**

HIGHLIGHTS

- Industrial Condo Complex
- Variety of businesses in the Complex
- Private Entrances
- Individual hvac units
- Overhead doors (some units)
- Surface and street parking

LEASE RATE

Retail Exposure!

Unit 10206

1,000 square feet (approx.)

\$2,250.00/Month

Available July 1st

Unit 10218

800 square feet (approx.)

\$1,750.00/Month

Gross Rents + Utilities

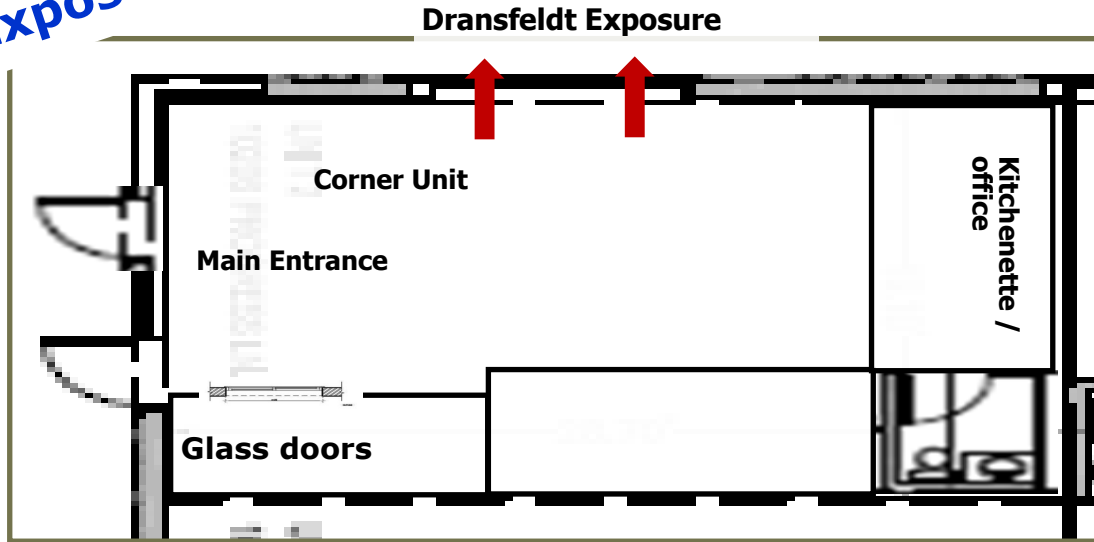
FOR MORE INFORMATION, PLEASE CALL:
John V. Propp, CCIM - 303-692-1816
John@JohnProppCommercial.com
6020 Greenwood Plaza Blvd., Suite 100
Greenwood Village, CO 80111
learn more at www.JohnProppCommercial.com



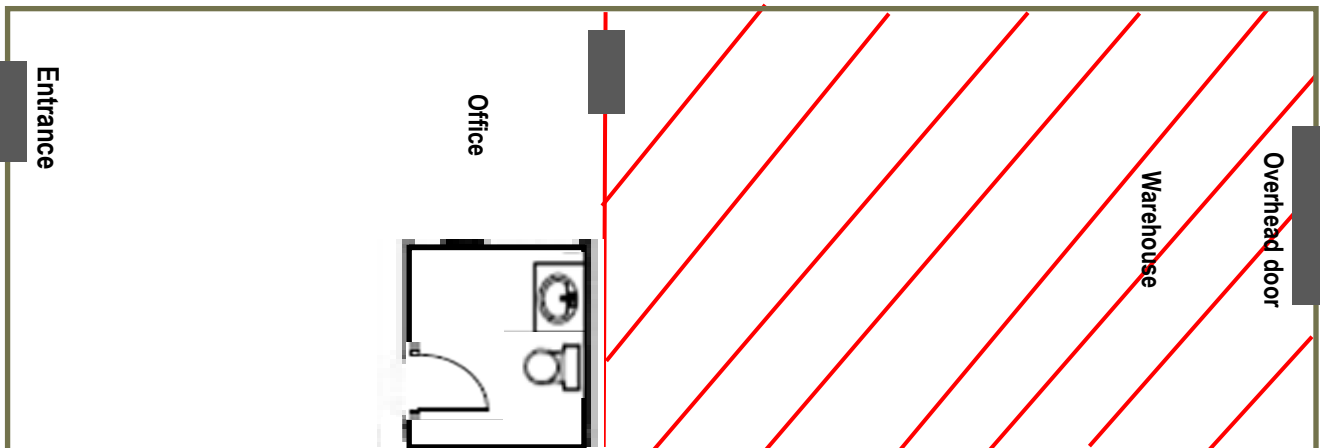
**DRANSFELDT FLEX/WAREHOUSE CONDOS
10206, 10218 PROGRESS LANE
PARKER, CO 80134**

10206 Progress Lane—\$2,250.00/Month

Retail Exposure!



10218 Progress Lane—\$1,750.00/Month



No warranty or representation is made as to the accuracy of the foregoing information. Terms of sale or lease and availability are subject to change or withdrawal without notice.